

Family Voices

Office of Community Living Updates

Bonnie Silva, Director
June 6, 2024



Topics

1. Case Management Redesign Update
2. Community First Choice Summary
3. Merging the Children with Life Limited Illness Waiver and the Children's HCBS Waiver Merger
4. Questions

Case Management Redesign Update



How We Got Here

2014

Community Living Advisory Group (CLAG) & CMS



Mandate Issued

Conflict-free Case Management & Streamlined Access into HCBS System

2014 - 2021

- National review of state best practices
- Legislation & rates
- Stakeholder work
- Alignment with CO LTSS Future Vision

*Department
Planning
Process*

Implementation

2022 - 2024

Case Management Redesign

- Care & Case Management System
- Rule change
- RFP & new contracts
- Transitions

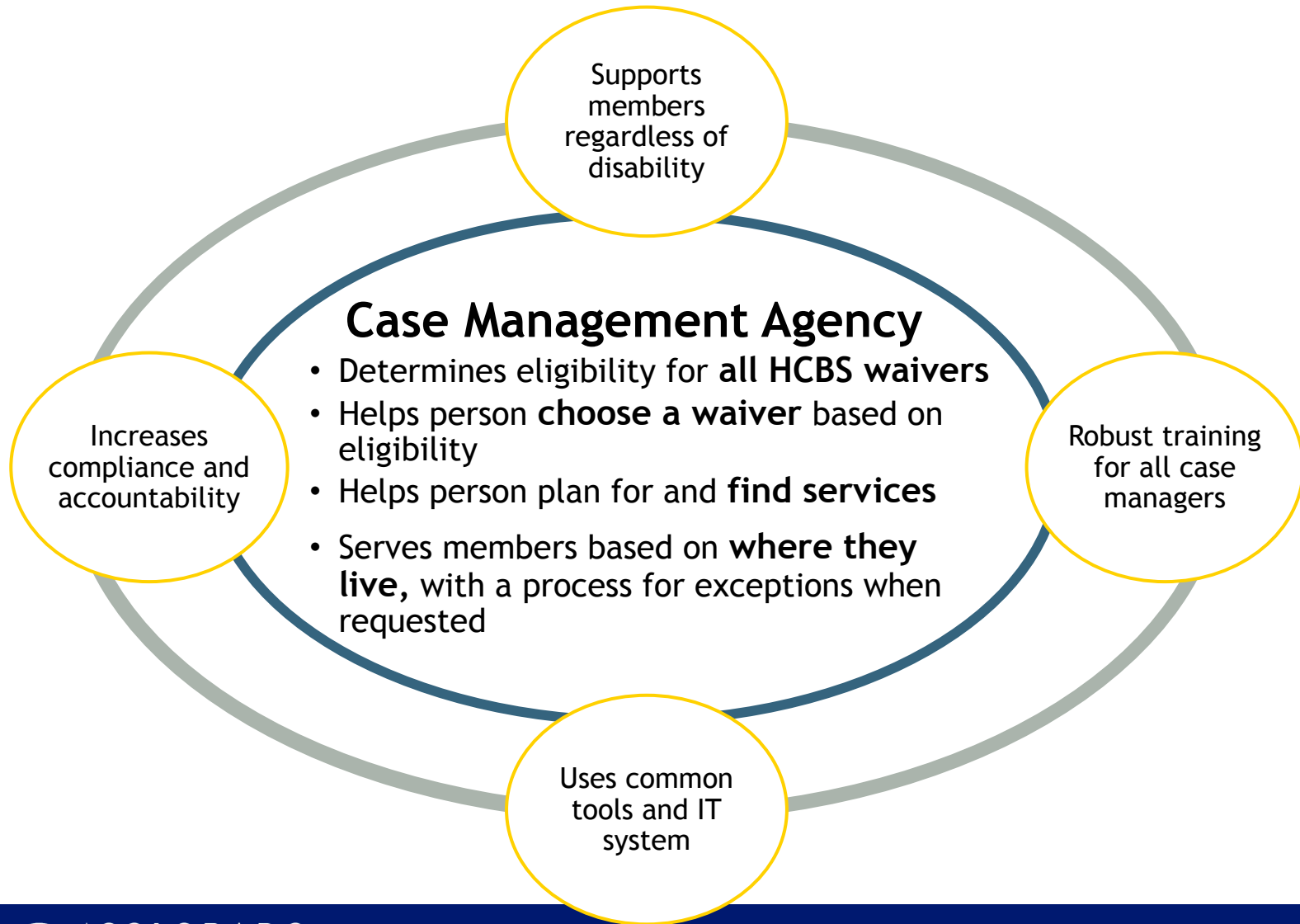


COLORADO

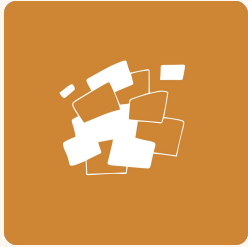
Department of Home Care and
Policy & Financing

HCBS = Home Care and Community-Based Services | LTSS = Long-term Services and Supports | RFP = Request for Proposal

Case Management Redesign



The Future of Case Management



New Structure

A more person-centered approach with each agency serving people with all disabilities in their geographic area with a rate structure and a single information management system that supports quality



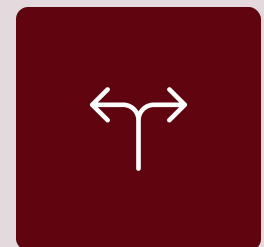
Knowledge

Training for agencies to serve all members in a disability culturally competent manner through a new Learning Management System (LMS) and direct agency support



Accountability

Public-facing score cards and appropriate caseloads to ensure consistent, quality case management



Conflict-Free

Case management and service delivery done by separate entities unless a rural exception is granted; meeting federal requirements and opening doors to additional program expansion and enhancement

What is NOT changing?

Access to **services**

Waiver **eligibility**

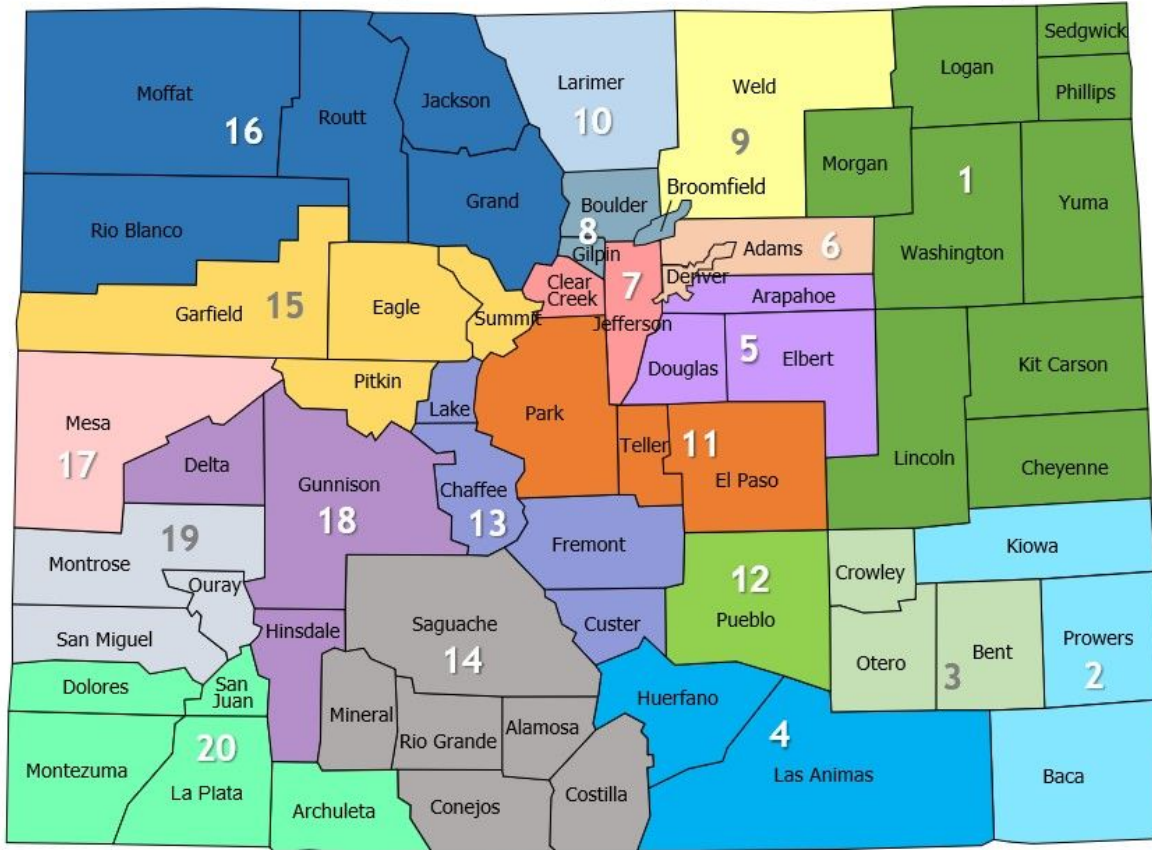
Person-centered approach

Required **case management**

Local **knowledge and expertise**



Case Management Agency Regional Map



#	Agency Name	Counties Served
1	Northeastern Colorado Association of Local Governments (NECALG)	Cheyenne, Kit Carson, Lincoln, Logan, Morgan, Phillips, Sedgwick, Washington, Yuma
2	Prowers County Public Health	Baca, Kiowa, Prowers
3	Otero County	Bent, Crowley, Otero
4	Las Animas County	Huerfano, Las Animas
5	Developmental Pathways (DP)	Arapahoe, Douglas, Elbert
6	Rocky Mountain Human Services (RMHS)	Adams, Denver
7	Jefferson County	Clear Creek, Jefferson
8	Adult Care Management, Inc. (ACMI)	Boulder, Broomfield, Gilpin
9	Weld County	Weld
10	TBD	Larimer
11	The Resource Exchange (TRE)	El Paso, Park, Teller
12	TBD	Pueblo
13	Rocky Mountain Health Maintenance Organization, Inc (RMHP)	Chaffee, Custer, Fremont, Lake
14	Rocky Mountain Health Maintenance Organization, Inc (RMHP)	Alamosa, Conejos, Costilla, Mineral, Rio Grande, Saguache
15	Garfield County	Eagle, Garfield, Pitkin, Summit
16	Rocky Mountain Health Maintenance Organization, Inc (RMHP)	Grand, Jackson, Moffat, Rio Blanco, Routt
17	Rocky Mountain Health Maintenance Organization, Inc (RMHP)	Mesa
18	Rocky Mountain Health Maintenance Organization, Inc (RMHP)	Delta, Gunnison, Hinsdale
19	Montrose County	Montrose, Ouray, San Miguel
20	Community Connections, Inc. (CCI)	Archuleta, Dolores, La Plata, Montezuma, San Juan

When will my Defined Service Area (DSA) Transition?

Phase 1: November 1, 2023

Phase 2: March 1, 2024

Phase 3: July 1, 2024

DSA 2- Prowers County Public Health
DSA 3- Otero County
DSA 5- Developmental Pathways (DP)
DSA 6- Rocky Mountain Human Services (RMHS)
DSA 11- The Resource Exchange (TRE)
DSA 13- Rocky Mountain Health Maintenance Organization, Inc (RMHP)
DSA 14- RMHP
DSA 17- RMHP
DSA 20- Community Connections, Inc. (CCI)

DSA 1- Northeastern Colorado Association of Local Governments (NECALG)
DSA 4- Las Animas County
DSA 9- Weld County
DSA 12- TRE
DSA 18- Rocky Mountain Health Maintenance Organization, Inc (RMHP)
DSA 19- Montrose County
DSA 10- Foothills Gateway, Inc.

DSA 7- Jefferson County
DSA 8- Adult Care Management, Inc. (ACMI)
DSA 15- Garfield County
DSA 16- Rocky Mountain Health Maintenance Organization, Inc (RMHP)



Community First Choice Summary



1915(c) Waiver versus 1915(k) CFC Authorities

1915(c) Waiver	1915(k) CFC
<p>Through the 1915(c) waiver program, a state can help people who need Long-Term Services and Supports (LTSS) and are Medicaid-eligible by designing its HCBS services based on their needs. These waivers cannot be limited to a certain ethnic or racial group but can be limited in other ways:</p> <ul style="list-style-type: none">• May be statewide or geographically limited in coverage• May be limited to a certain medical diagnosis (e.g., mental health, developmental disability)• Waiver services may be broad in scope <p>Waivers in Colorado:</p> <ul style="list-style-type: none">• BI, CMHS, CIH, DD, EBD, SLS, CLLI, CHRP, CHCBS	<p>Through 1915(k) CFC, states can expand Medicaid opportunities for the provision of home and community-based LTSS, and facilitates community integration.</p> <ul style="list-style-type: none">• CFC services must be available to all CFC-eligible members and cannot be limited to certain populations.• Members that are waiver eligible will be eligible for CFC. These members will receive their core ADL and IADL supports and services through CFC versus the waiver. Members can receive waiver services and CFC services at the same time.

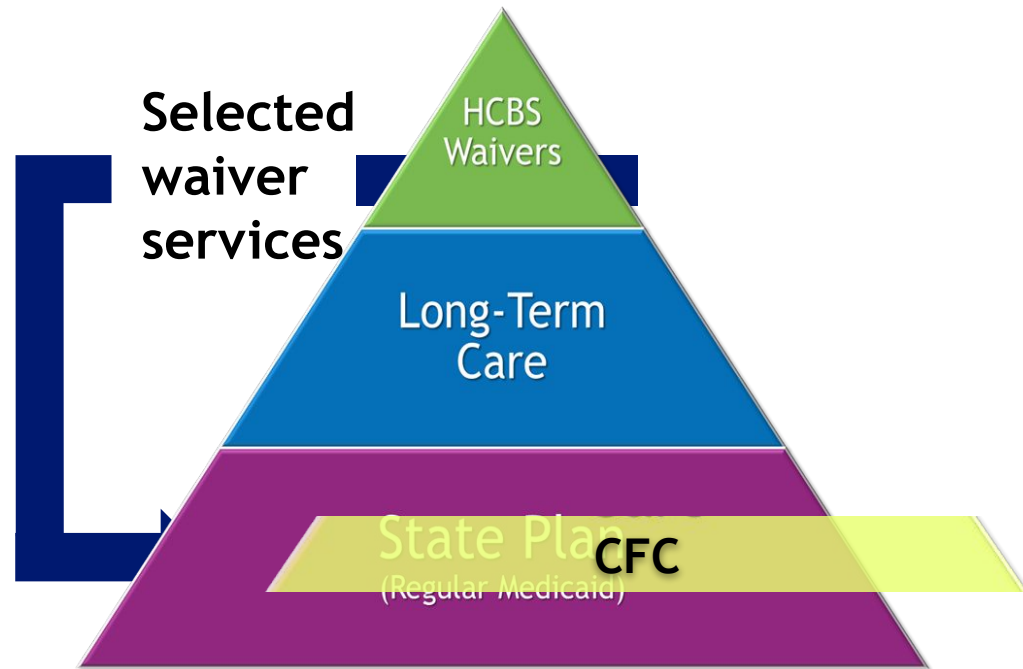


Community First Choice

Goal of CFC: Making HCBS accessible for more Medicaid members with expanded options and availability for self-directed care

Mandatory and Select Optional Services:

- Homemaker
- Personal Care
- Health Maintenance Activities
- Acquisition, Maintenance, and Enhancement of Skills (new federally required service)
- Remote Supports
- Remote Supports Technology
- Home Delivered Meals
- Transition Setup
- Electronic Monitoring
- Personal Emergency Response System
- Medication Reminders



COLORADO

Department of Health Care
Policy & Financing

Children with Life Limited Illness Waiver and Children's HCBS Waiver Merger



Overview

Two changes are being made that will streamline and increase access to services for members

- In July 2024, the Case Management Service will be moved out of the Children's Home and Community-Based (CHCBS) waiver and Case Management Agencies will be paid administratively for providing case management for members enrolled in CHCBS
- With Community First Choice (CFC) implementation, In-Home Services and Supports, Health Maintenance Activities, will be moved from the CHCBS Waiver into CFC



Children with Complex Health Needs Waiver

- A new waiver that will include:
 - all current Children with Life Limiting Illnesses (CLLI) Waiver services
 - plus the new Wellness Education Benefit
- The new waiver will have expanded eligibility criteria
- Services available to Children's Home and Community-Based Services members will *increase*
- Services available to CLLI members will remain the same (plus the Wellness Education Benefit)
- To see a chart of what the children's waivers and services will look like after the merger and CFC implementation, [visit the CFC Resources webpage](#)



Wellness Education Benefit

- Wellness Education Benefit (WEB) is individualized educational materials designed to reduce the need for a higher level of care by offering educational materials that provide members and their families with actionable tools that can be used to prevent the progression of a disability, increase community engagement, combat isolation, and improve awareness of Medicaid services.
- The benefit will be available to CHCBS waiver members starting in Spring 2024.
- Some members have already received their first WEB.
- The benefit should be added to all waivers by July 1, 2025

Children with Complex Health Needs Waiver Services

- **Proposed Service Package for Merged Waiver**

- Counseling/Bereavement Services
- Expressive Therapy
- Massage Therapy
- Palliative/Supportive Care
- Respite Care Services
- Therapeutic Life Limiting Illness Support
- Wellness Education Benefit

- **Targeting Criteria and Level of Care Requirements**

- Will be expanded so all current CLLI and CHCBS members meet eligibility requirements

Benefit Transitions

Children with Complex Health Needs Waiver (CCHN)

2023-2024

2024-2025

2025-2026

2026

Current Status

CHCBS

- Case Management
- In Home Support Services (HMA only)

CLLI

All current services

Case Management moves 7/1/2024

CHCBS

- In Home Support Services (HMA only)
- Wellness Education Benefit

CLLI

All current services

Members transition from CHCBS to CwCHN. CFC launches

CHCBS

- In Home Support Services (HMA only)
- Wellness Education Benefit

CCHN

- All current CLLI services
- Wellness Education Benefit

CFC

In Home Support Services

All members transitioned to new Waiver. CHCBS concludes

CCHN

- All current CLLI services
- Wellness Education Benefit

CFC

In Home Support Services



Project Timelines: Children with Complex Health Needs Waiver (CCHN)

Milestone	Estimated end date
Public Noticing Period	February 2025
CMS approval	7/1/2025
Clean-up legislation	FY 2025/26
Colorado Rules and Regulations	July 2025
Case Manager Training	January 2025
CwCHN waiver available for member enrollment!	July 2025



Paid Caregiver(s)

- Updated information on paid caregivers coming out shortly.
- CFC will expand what caregivers can get paid for and what models (IHSS, CDASS, & Agency-Based) of care families can use.

Questions on Engagement

- Questions
- How often would CDAC/Children's community like updates on this project?
- What other stakeholder meetings would be good to attend?
- Would an evening meeting be helpful?



Discussion & Questions

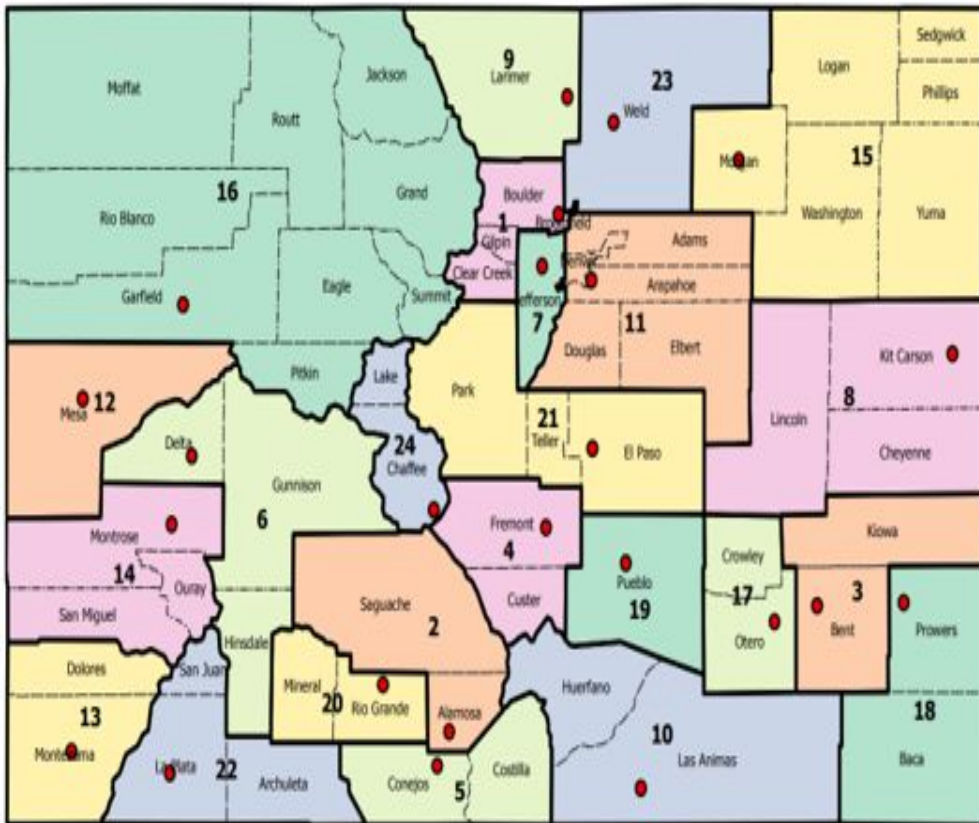
HCBS Waivers and Case Management

Currently, the HCBS waiver a person chooses to pursue determines the type of case management agency they will go to.

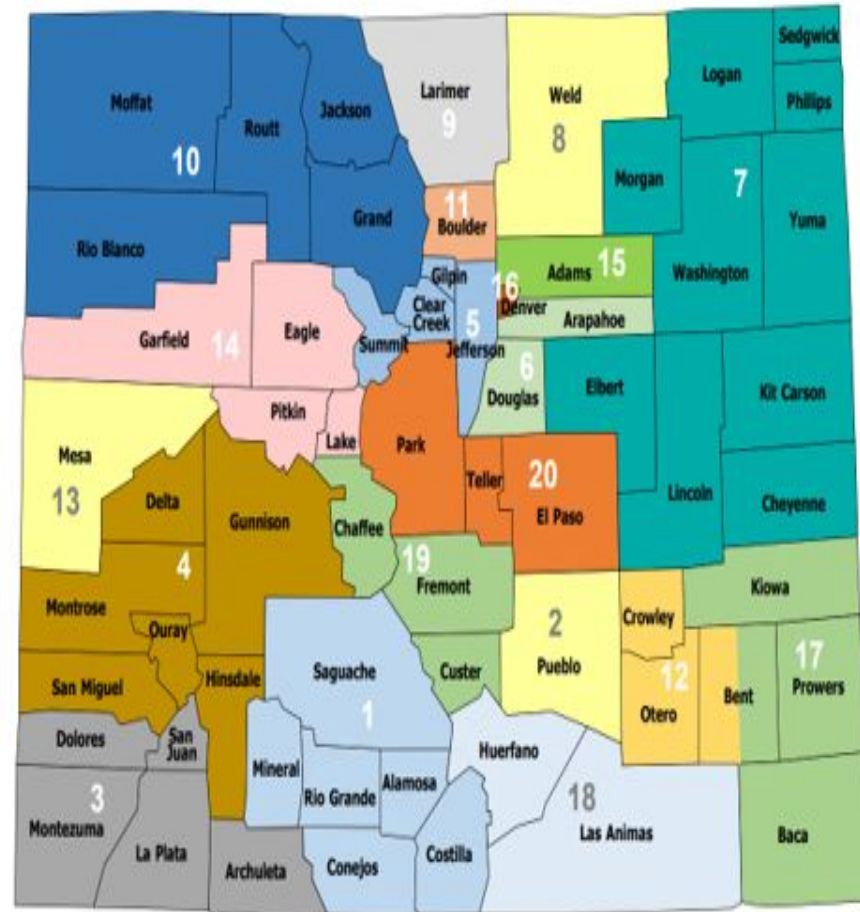
Single Entry Point (SEP) Agency	Community Centered Board (CCB)	Private Case Management Agency
<p>Serves waivers targeted to individuals without an IDD</p> <ul style="list-style-type: none"> • Brain Injury Waiver (BI) • Children with Life Limiting Illness Waiver (CLLI) • Community Mental Health Supports Waiver (CMHS) • Complementary and Integrated Health Waiver (CIH formerly SCI) • Elderly, Blind and Disabled Waiver (EBD) 	<p>Serves waivers targeted to individuals with an IDD</p> <ul style="list-style-type: none"> • Children’s Extensive Support Waiver (CES) • Children’s Habilitation Residential Program Waiver (CHRP) • Developmental Disabilities Waiver (DD) • Supported Living Services Waiver (SLS) 	<p>Serves children with significant medical needs</p> <ul style="list-style-type: none"> • Children’s Home and Community Based Services Waiver (CHCBS)



Current SEP and CCB Regions



● SEP Agency Location
 □ SEP Covered Counties



Bringing Change to CMAs

- Executive Order and Community Living Advisory Group (CLAG)
- One place to go for all waivers
- Conflict-Free Case Management
- New Care and Case Management System and Assessment and Person-Centered Support Plan Process

= Case Management Redesign





Key Outcomes of Case Management Redesign



Intake, Eligibility, & Case Management Agency



Case Management Agency (CMA) Selection Process



- Proposals Submission Deadline Closed on February 28th
- All Defined Service Areas received at least 1 proposal
- Notification of Intent to Award - June/July 2023
- Phased Transition Contracts Effective Nov 1, 2023, March 1 and July 1, 2024



COLORADO

Department of Health Care
Policy & Financing

Parent Caregiver Options

Pediatric Personal Care - State Plan	Long-Term Home Health	Private Duty Nursing	CFC Agency Personal Care (PC) and Homemaker	CFC In-Home Support Services: PC, HMA, Homemaker	CFC Consumer Directed Attendant Support Services: PC, HMA, & Homemaker
<p>Parents cannot be caregivers</p>	<p>Parent caregivers must be 1) a licensed CNAs & 2) Employed a licensed Home Health Medicaid provider</p> <p><i>(CCR 8.520.5.B.13.h)</i></p>	<p>Parent caregivers must be licensed RNs or LPNs</p>	<p>Parents can be caregivers, but must be employed by a Medicaid enrolled agency.</p>	<p>Parents can be caregivers, but must be employed by an IHSS Medicaid enrolled agency.</p>	<p>Parents can be caregivers, if providing extraordinary care.</p>